

LARGEST EXHIBITION ON PLYWOOD, LAMINATES,  
WOOD & WOODWORKING MACHINERY, FURNITURE & FURNITURE  
PRODUCTION TECHNOLOGY, FURNISHING, TOOLS, RAW MATERIALS  
AND ALLIED PRODUCTS

**KENYA**

**WOOD**

**3<sup>rd</sup>**  
Edition

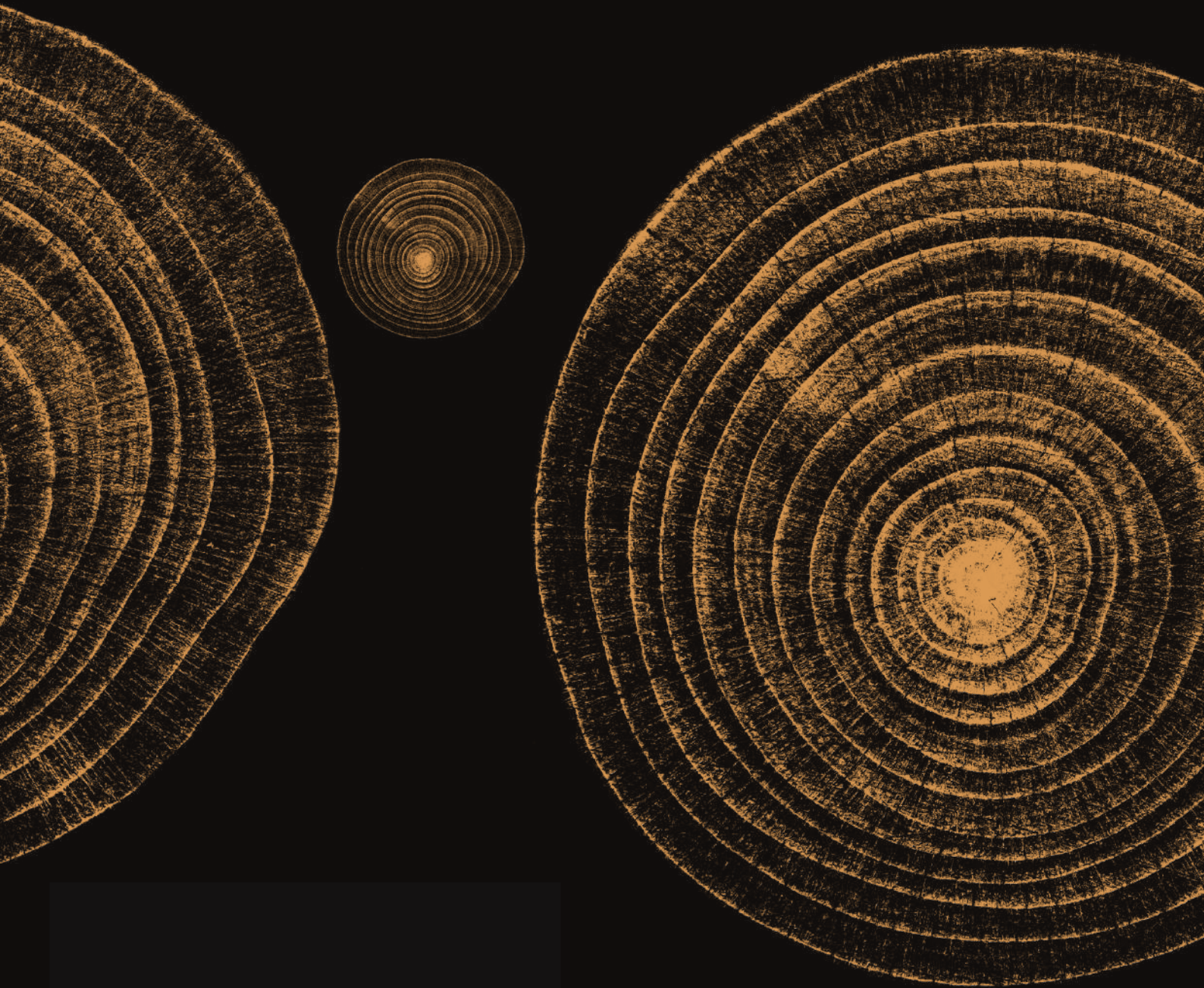
---

INTERNATIONAL EXPO

---

**11-12-13**  
**JUNE 2026**

*Sarit Expo Centre,  
Nairobi, Kenya*



# ABOUT THE SHOW

*The 3rd Kenya Wood International Exhibition 2026 is Kenya's premier B2B platform dedicated to the Woodworking and Furniture Technology industry. Scheduled to be held from 11th – 13th June 2026 at the Sarit Expo Centre, Nairobi, alongside Kenya Buildcon International Expo 2026, the exhibition will bring together global industry leaders, manufacturers, innovators, and decision-makers under one roof.*

*Kenya Wood International Exhibition presents a comprehensive showcase of advanced woodworking machinery, raw materials, panel production technologies, automation systems, furniture manufacturing solutions, and next-generation component technologies.*

*It serves as a powerful business networking and sourcing platform for East Africa's rapidly expanding wood and furniture market.*

## INDUSTRY OVERVIEW

- *East African economies consume approximately US\$ 1.2 billion worth of furniture annually, of which 22% is imported. With rising urbanization and increasing purchasing power, growth prospects remain highly favorable.*
- *Kenya, Ethiopia, Tanzania, and Uganda are the dominant furniture markets in the region.*
- *Kenya is the largest furniture market in East Africa and produces nearly twice as much furniture as Ethiopia, the next largest market.*
- *Kenya is also the largest market for Particle Board, Gypsum Board, MDF Board, and Plywood, with furniture demand growing at nearly 10% annually.*
- *There is strong and growing demand for laminate and decorative surface products across Kenya and the wider East African region.*
- *Plywood mills in Kenya consume about 15% of industrial wood available for furniture manufacturing and produce plywood, MDF, particle board, block board, and veneer.*
- *Kenya's wood carving industry utilizes approximately 600 tonnes of wood annually.*
- *The wood flooring sector has witnessed tremendous growth over the last five years as consumers increasingly shift from traditional tiles to wood blocks.*
- *The industry produces approximately Ksh 4.5 billion worth of furniture annually, exporting around Ksh 0.2 billion, and contributes nearly 5% to Kenya's GDP.*



# MEET THE RIGHT PEOPLE AT THE RIGHT PLACE

**Kenya Wood International Exhibition will serve as a strategic meeting point for:**

- *International Wood Industry Executives*
- *Institutional Investors*
- *Importers & Distributors*
- *Venture Capitalists*
- *Analysts*
- *Woodworkers & Manufacturers*
- *Academia & Industry Experts*



**The event will create opportunities to establish partnerships, explore joint ventures, and expand into the fast-growing East African market.**



## WHY EXHIBIT?

*The "Kenya Wood" exhibition serves as a neutral platform, uniting all stakeholders in the wood industry.*

**The objectives include:**

- *Facilitating knowledge sharing and market understanding.*
- *Stimulate B2B and B2C interactions.*
  - *Attracting industry players and visitors from over 07 countries.*
- *Providing a concrete strategy to address industry challenges and capitalize on opportunities.*

## EXHIBITOR PROFILE

- \* Wood Products and Suppliers
- \* All Kinds of Panels
- \* All Related Forest Products
- \* Chipboard and MDF
- \* Finishing and Coating
- \* Glue and Fixing Products
- \* Laminates
- \* Papers and Cardboard
- \* Plywood, Hardwood Decorative and Composite
- \* Polishing Products
- \* Spraying Equipment
- \* Staplers
- \* Surface Treatment and Finishing Tools
- \* Timber Bases Technical Solutions
- \* Timber, Hardwood, Softwood, and Exotic Pieces
- \* Treatment Products
- \* Veneer
- \* Wood and Paper Recycle
- \* Wood and Timber Flooring
- \* Wood Raw Materials
- \* Wooden Decorative Materials and Units
- \* Wooden Windows and Doors
- \* Woodworking Machinery
- \* Adhesives for the Wood
- \* Blades and Knives
- \* Bleaching Plants
- \* Boring Machines
- \* Cladding
- \* Cutting Machines and Tools
- \* Dispersions
- \* Dowelling Machines
- \* Dryer and Grader
- \* Dust Control and Vacuum Cleaners
- \* Edge Banders/Trimmers
- \* Forestry Equipment & Machinery
- \* Furniture Machinery
- \* Machines for Raw Material Screening & Cleaning
- \* Molding Machines/Molders
- \* Molding, Beading, Paneling
- \* Molding Machines/Molders
- \* Molding, Beading, Paneling
- \* Particle Board Plant
- \* Plywood Manufacturing Machinery
- \* Pneumatic Nail, Pinning Gun
- \* Prepress
- \* Press and Plates
- \* Profile Cutting and Forming Machine
- \* PUR Adhesives
- \* Sanding and Polishing Machines
- \* Saws and Sawing Machines
- \* Special Adhesives for the Wood
- \* Specialized Wood Production Plant
- \* Spindling and Turning Machine
- \* Steam Preheating
- \* Timber Processing
- \* Veneering Machines and Plants
- \* Wood Treatment Plants
- \* Fastening Systems
- \* Fiber Dryer
- \* Finishing and Fittings
- \* Foams and Sealants
- \* Gluing and Fixing Machine
- \* Gluing Systems
- \* Hotmelt
- \* Joinery and Assembly Machines
- \* Laminating Equipment
- \* Carving Machinery
- \* CNC Machining Center
- \* Hot Coating

## VISITOR PROFILE

- \* Furniture Manufacturers
- \* Plywood Manufacturers
- \* Particle Board Manufacturers / Traders
- \* Laminates Manufacturers / Traders
- \* Saw Millers
- \* Timber Importers / Merchants
- \* Importers & Exporters (Wood-related products)
- \* Procurement Managers (Wood-related products)
- \* Manufacturers of Wood-based Products / Articles
- \* Kitchen & Cabinet Manufacturers
- \* Office Furniture Manufacturers
- \* Wooden Shelves Manufacturers
- \* Craftsmen / Carpenters
- \* Interior Decorators
- \* Architects & Builders
- \* Hardware Manufacturers
- \* Hardware Distributors / Dealers
- \* Furniture Fittings Manufacturers
- \* Furniture Fittings Distributors & Dealers
- \* Government Officers
- \* Industry Associations
- \* Packaging Industry

# GLIMPSES

